

# **CITY OF EVERMAN, TEXAS**

**212 North Race St.  
Everman, Texas 76140**

## **2012/2013 ANNUAL OPERATING BUDGET & CAPITAL IMPROVEMENT PLAN**



**October 1, 2012  
through  
September 30, 2013**

This budget will increase total property taxes from last year's budget by \$110,226.00, a 5.91% increase.

# TABLE OF CONTENTS

BUDGET LETTER	1
CITY OFFICIALS	3
CITY BOARDS	4
GENERAL INFORMATION	5
OPERATIONAL CHART	6
ORDINANCES	7
PROPERTY TAXES	16
GENERAL FUND REVENUE	19
GENERAL FUND EXPENDITURES	22
WATER/SEWER FUND REVENUE	28
WATER/SEWER FUND EXPENDITURES	30
DEBT SERVICE FUND	33
ECONOMIC DEVELOPMENT 4-B SALES TAX	36
CRIME CONTROL DISTRICT – SPECIAL USE TAX	38
STREET IMPROVEMENT FUND – SPECIAL USE TAX	40
MISCELLANEOUS INFORMATION	42
HISTORICAL INFORMATION	44
CAPITAL IMPROVEMENT PLAN	48



817-293-0525 • 212 North Race Street • Everman, Texas 76140

OFFICE OF CITY MANAGER

October 1, 2012

The Honorable Mayor and Members of the City Council  
Everman, Texas

In accordance with State of Texas Civil Statutes and the City Charter, presented herewith is the City Budget for the period of October 1, 2012 through September 30, 2013.

The General Fund Budget is based on an ad valorem tax rate of 1.1054127 per one hundred dollar value, which is the same as last year. Our total 2012 evaluation has decreased from \$116,042,457 last year to a gross evaluation of \$113,470,192 this year. This is a 8% decrease in the gross evaluation (before exemptions) from the 2011 evaluation.

The net taxable value for levying purposes is \$1,134,702 as of October 1, 2012.

General Fund Revenue is estimated to be \$3,447,370 and expenditures are estimated at \$3,447,370.

Water Fund Revenue is estimated to be \$1,757,937 and expenditures are estimated to be \$1,757,936.75.

Total proposed operating budget for the General and Water Funds for fiscal year 2012/2013 is proposed at:

Total Revenue	\$5,205,307
Total Expenditures	\$5,505,306.75

It is still necessary to carry over money from the General Reserve Funds in the amount of \$408,382 and Water Reserve Funds in the amount of \$225,487 in order to balance the budget.

The Debt Service Fund will continue making payments for the General Obligation Refunding Bonds, Series 2007.

Revenue income generated from the ½ cent sales tax increase for the Economic Development Corporation passed by election of August 1999 and equates to \$123,116 for last year. This year we expect to receive an estimated \$125,000 which is a conservative estimate due to the current economic situation.

Revenue income generated from the ¼ cent sales tax increase for Crime Control passed by election on May 4, 2002 and equates to \$44,709 received in fiscal year ending September 30, 2012. The Everman Crime Control District began receiving this revenue in December 2002. This year we expect to receive \$45,000. The 2012/2013 Crime Control Budget includes one new police vehicle.

The City of Everman also continues to conserve its fund balance by keeping a sharp eye on budget spending. It has indeed been a difficult budget process and I commend the City Council and City Staff for being good stewards of the citizens' tax dollars.

Respectfully submitted,



Donna Anderson  
City Manager

# CITY OFFICIALS

## Mayor

Jim Stephenson

## Council Members

Michelle Meyer, Council Member Place I

Kelly Denison, Council Member Place II

Johnnie Mae Allen, Council Member Place III

Susan Mackey, Council Member Place IV

Judy Sellers, Council Member Place V

Ray Richardson, Council Member Place VI, Mayor Pro Tem

## City Manager

Donna Anderson

Betsy Elam, City Attorney

Kathy Renshaw, Director of Finance

Mindi Parks, City Secretary

Michael Box, Director of Public Works

Randy Sanders, Director of Public Safety

# CITY BOARDS

## Board of Adjustment & Board of Appeals

Howard Walley-Chair  
James Touchstone  
Beverly Wade  
Judy Greeson  
Patsy Malone

## Library

Don Pittman-Chair  
Vicky Garza-Vice Chair  
Nelda Winnett  
Patsy Malone  
Mary Drake

## Everman Community Development Corporation

Denise Douglass – Pres.  
Margaret Sides – Vice Pres.  
Ray Richardson  
Burl Hollingsworth

Johnnie Allen  
Jim Bauer  
Charles Reed

## Everman Crime Control District

Jim Stephenson – Chair  
Kelly Denison  
Susan Mackey  
Ray Richardson

Michelle Meyer  
Johnnie Mae Allen  
Judy Sellers

## Planning and Zoning Commission

Charles Reed – Chair  
Steve Sellers  
Glenda Pruett

Rick Malin  
Debbie Tywater

## Everman Animal Control Advisory Board

Denise Douglass-Chair  
Jeanie Bryant  
Gilbert Salas

Randy Sanders

# CITY OF EVERMAN

## Municipal Officials

The City operates under the authority of the Home Rule Charter, adopted April 7, 1986, and is governed by the Council/Manager form of government.

The City Council is composed of a Mayor and six (6) Council members. All members of the City Council, other than the Mayor, are elected under the place system.

The Mayor and each member of the City Council hold office for a two (2) year term. All Places and the Mayor are elected in odd numbered years.

<u>Title</u>		<u>FY 2011-2012</u> <u>Terms of Service (1)</u>
Mayor	Jim Stephenson	6.5 <sup>th</sup> Mayor Term *
<u>Council:</u>		
Place 4	Susan Mackey	8
Place 1	Michelle Meyer	2
Place 2	Kelly Denison	5
Place 3	Johnnie May Allen	3.5
Place 5	Judy Sellers	5.5
Place 6	Ray Richardson, Mayor Pro Tem	6

		<u>Years of Service</u>
City Manager	Donna Anderson, TRMC **	12.0 years
City Secretary	Mindi Parks	0.9 years
City Engineer	Kimley-Horn & Assoc., Inc.	16.5 years
City Attorney	Betsy Elam (Taylor, Olson, Adkins, Stralla, and Elam)	14.0 years

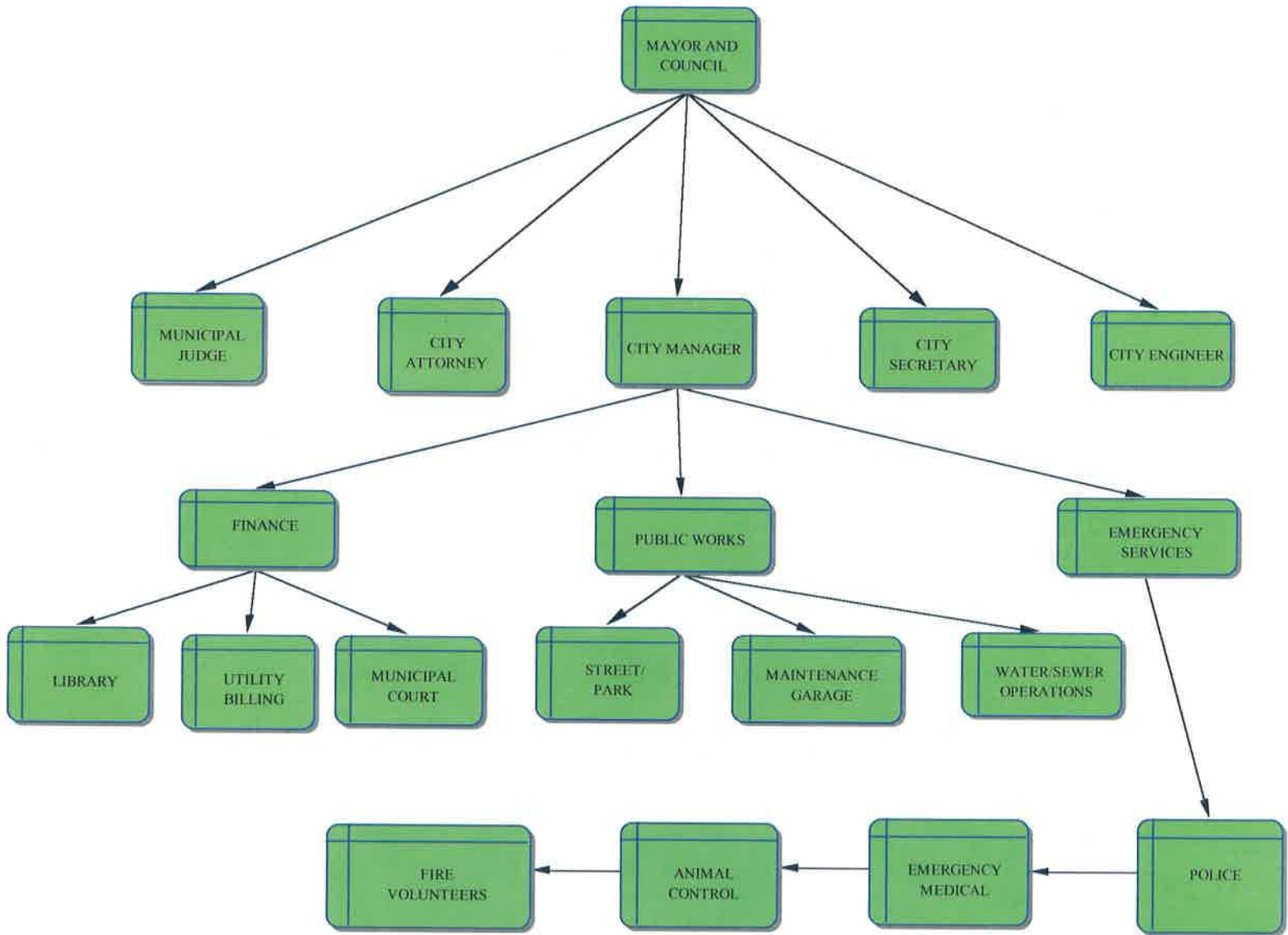
(1) Terms of Service = 2 year increments

\* Served 1.5 Terms as Council Member – Elected Mayor in May 2000

\*\* Total years of service – 31 years



**CITY OF EVERMAN  
OPERATIONAL CHART  
2011/2012**



# ORDINANCES

## **ORDINANCE # 661**

**AN ORDINANCE ADOPTING A BUDGET AND APPROPRIATING RESOURCES FOR THE BUDGET YEAR BEGINNING OCTOBER 1, 2012 AND ENDING SEPTEMBER 30, 2013 APPROVING BUDGET FIGURES FOR FISCAL YEAR 2012/2013 FINDING THAT A PUBLIC HEARING WAS HELD IN ACCORDANCE WITH STATE LAW; PROVIDING FOR THE FILING OF THE BUDGET AS REQUIRED BY STATE LAW; PROVIDING THAT THIS ORDINANCE SHALL BE CUMULATIVE OF ALL ORDINANCES; PROVIDING A SEVERABILITY CLAUSE AND PROVIDING AN EFFECTIVE DATE.**

**WHEREAS**, the City of Everman, (hereinafter referred to as the "City"), is a Home Rule municipality located in Tarrant County, created in accordance with the provisions of Chapter 6 of the Local Government Code and operating pursuant to the enabling legislation of the State of Texas; and

**WHEREAS**, the City Manager of the City submitted a budget proposal to the City Council prior to the beginning of the fiscal year, and in said budget proposal set forth the estimated revenues and expenditures; and

**WHEREAS**, the City Manager of the City has filed with the City Secretary a budget outlining all proposed expenditures of the Government of the City for the fiscal year beginning October 1, 2012 and ending September 30, 2013, (hereinafter referred as the "Budget") and

**WHEREAS**, the Budget, a copy of which is attached hereto as Exhibit "A" and incorporated herein for all purposes, specifically sets forth each of the various projects for which appropriations are delineated, and the estimated amount of money carried in the Budget for each of such projects; and

**WHEREAS**, the budget has been filed with the City Secretary for at least thirty (30) days before the date the City Council makes its tax levy for the fiscal year and such Budget has been available for inspection by any taxpayer; and

**WHEREAS**, the public notice of a public hearing on the proposed Budget, stating the date, time, place and subject matter of said public hearing, was given as required by the laws of the State of Texas; and

**WHEREAS**, such public hearing was held on September 4, 2012, prior approval of such date being hereby ratified and confirmed by the City Council, and those wishing to speak on the Budget were heard; and

**WHEREAS**, the City Council has studied the Budget and listened to the comments of the taxpayers at the public hearing held therefore and has determined that the Budget attached hereto is in the best interest of the City and that same should be approved and adopted.

**NOW THEREFORE, BE IT ORDAINED BY THE CITY COUNCIL OF THE CITY OF EVERMAN, TEXAS, THAT:**

**SECTION 1.** All of the above premises are found to be true and correct and are incorporated into the body of this Ordinance as if copied in their entirety.

**SECTION 2.** The Budget as set forth in Exhibit "A", of the revenue of the City and the expenses of conducting the affairs thereof for the ensuing fiscal year beginning October 1, 2012, and ending September 30, 2013, as modified by the City Council, be, and the same is, in all things adopted and approved as the Budget of the City of Everman for the fiscal year beginning October 1, 2012 and ending September 30, 2013, and there is hereby appropriated from the funds indicated therein such sums for the projects, operations, activities, purchases and other expenditures proposed in the Budget.

**SECTION 3.** The City Manager shall file or cause to be filed a true and correct copy of this ordinance, along with the approved Budget attached hereto, with the City Secretary. The City Manager shall file or cause to be filed a true and correct copy of this ordinance, along with the approved Budget attached hereto, and any amendments thereto, in the office of the County Clerk of Tarrant County, Texas as required by State law.

**SECTION 4.** That the revised figures, prepared and submitted by the City Manager for the 2012/2013 budget, be, and the same are hereby, in all things, approved and appropriated, and any necessary transfers between accounts and departments are hereby authorized, approved and appropriated.

**SECTION 5.** Any and all ordinances, resolutions, rules, regulations, policies or provisions in conflict with the provisions of this ordinance are hereby repealed and rescinded to the extent to conflict therewith.

**SECTION 6.** It is hereby declared to be the intention of the City Council that the phrases, clauses, sentences, paragraphs and sections of this ordinance are severable, and if any phrase, clause, sentence, paragraph or section of this ordinance shall be declared unconstitutional by the valid judgment or decree of any court of competent jurisdiction, such unconstitutionality shall not affect any of the remaining phrases, clauses, sentences, paragraphs and sections of this ordinance, since the same would have been enacted by the City Council without the incorporation in this ordinance of any such unconstitutional phrase, clause, sentence, paragraph or section.


**SECTION 7.** That this ordinance be in full force and effect from and after its adoption.

**PASSED AND APPROVED IN OPEN SESSION OF THE CITY COUNCIL OF THE CITY OF EVERMAN, TEXAS ON THE 11th DAY OF SEPTEMBER, 2012.**

APPROVED:

  
\_\_\_\_\_  
Jim Stephenson  
Mayor

ATTEST:

  
\_\_\_\_\_  
Mindi Parks  
City Secretary

**ORDINANCE # 662**

**AN ORDINANCE FIXING AND LEVYING MUNICIPAL AD VALOREM TAXES FOR THE CITY OF EVERMAN, TEXAS, FOR THE YEAR 2012 DIRECTING THE ASSESSMENT AND COLLECTION THEREOF; PROVIDING A SEVERABILITY CLAUSE; AND AN EFFECTIVE DATE CLAUSE.**

**BE IT THEREFORE, ORDAINED BY THE CITY COUNCIL OF THE CITY OF EVERMAN, TEXAS:**

**Section 1.** For the current expense of the City of Everman and for the general improvements of the City and its property, there is hereby levied and ordered to be assessed and collected for the year 2012 on all property situated within the corporate limits of the City limits of the City of Everman, and not exempt from taxation by valid laws, an ad valorem tax rate of 1.1054127 cents on the One Hundred (\$100.00) Dollars valuation of such property.

<u>0.9525657</u>	For the purpose of maintenance and operation.
<u>0.152847</u>	For the purpose of interest and sinking.
<u>1.1054127</u>	Total tax rate.

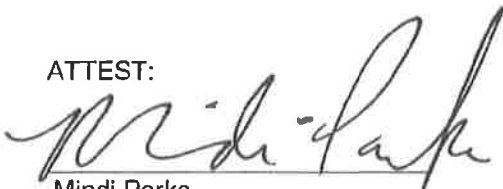
**Section 2.** That the taxes herein are levied according to law and shall be due and payable on October 1, 2012, and the same shall come delinquent on February 1, 2013. Should any taxpayer fail to make payment before the date of delinquency, the penalty as provided by law shall be assessed until the unpaid taxes and penalties have been satisfied. All prior year delinquent taxes will be used for the purpose of maintenance and operation, provided all debt requirements have been met.

**Section 3.** In the event any section, sub-section, clause, sentence, or phrase of this ordinance shall be declared or adjudged invalid or unconstitutional, such adjudication shall in no means affect any other section, sub-section, clause, sentence, or phrase of this ordinance, but all the rest thereof shall be in full force and effect just as though the section, sub-section, sentence, clause, or phrase so declared or adjudged invalid or unconstitutional was not originally a part thereof.

**Section 4.** This ordinance shall be in full force and effect from and after its passage and publication as provided by law.

**PASSED AND APPROVED IN OPEN SESSION OF THE CITY COUNCIL OF THE CITY OF EVERMAN, TEXAS ON THE 11<sup>th</sup> DAY OF SEPTEMBER, 2012.**

  
Jim Stephenson  
Mayor

ATTEST:  
  
Mindi Parks  
City Secretary

ATTACHMENT "A"  
**CITY OF EVERMAN**  
**GENERAL FUND REVENUE**

REVENUE SOURCE	AMOUNT
CARRY OVER PRIOR YEAR	408,382
CURRENT PROPERTY TAXES	1,158,971
DELINQUENT TAXES	21,000
PENALTY & INTEREST	24,000
FRANCHISE FEES/RIGHT OF WAY FEES	266,000
BINGO/MIXED DRINK TAX	25,600
SALES TAX	240,000
 SUB TOTAL	 2,143,953
 FEES/PERMITS	 410,450
DUE FROM OTHER AGENCIES	197,000
FINES/RECOVERY	58,000
MISCELLANEOUS	51,025
DUE FROM OTHER FUNDS	586,942
<b>TOTAL GENERAL FUND REVENUE</b>	<b><u>3,447,370</u></b>

**CITY OF EVERMAN**  
**GENERAL FUND EXPENDITURES**

EXPENDITURE BY FUNCTION	AMOUNT
<b>ADMINISTRATION</b>	
SALARY RELATED	165,057
SUPPLIES	6,900
SERVICES	49,570
MAINTENANCE	5,000
EQUIPMENT/LAND	11,700
<b>TOTAL ADMINISTRATION</b>	<b><u>238,227</u></b>
 <b>CITY SECRETARY</b>	
SALARY RELATED	57,982
SUPPLIES	2,600
SERVICES	28,772
MAINTENANCE	250
EQUIPMENT	0
<b>TOTAL CITY SECRETARY</b>	<b><u>89,604</u></b>
 <b>FINANCE</b>	
SALARY RELATED	124,664
SUPPLIES	2,000
SERVICES	137,387
MAINTENANCE	12,000
EQUIPMENT	0
<b>TOTAL FINANCE</b>	<b><u>276,051</u></b>

<b>COUNCIL</b>	
SALARY RELATED	0
SUPPLIES	500
SERVICES	14,300
MAINTENANCE	0
EQUIPMENT	0
<b>TOTAL COUNCIL</b>	<b><u>14,800</u></b>
<b>STREETS</b>	
SALARY RELATED	290,611
SUPPLIES	4,250
SERVICES	287,090
MAINTENANCE	35,790
EQUIPMENT	500
<b>TOTAL STREETS</b>	<b><u>618,241</u></b>
<b>PARKS</b>	
SALARY RELATED	40,282
SUPPLIES	2,000
SERVICES	28,000
MAINTENANCE	15,000
EQUIPMENT	0
<b>TOTAL PARKS</b>	<b><u>85,282</u></b>
<b>POLICE</b>	
SALARY RELATED	989,516
SUPPLIES	20,300
SERVICES	51,067
MAINTENANCE	33,350
EQUIPMENT	23,765
<b>TOTAL POLICE</b>	<b><u>1,117,998</u></b>
<b>MAINTENANCE GARAGE</b>	
SALARY RELATED	67,574
SUPPLIES	68,375
SERVICES	5,400
MAINTENANCE	82,972
EQUIPMENT	278
<b>TOTAL MAINTENANCE GARAGE</b>	<b><u>224,599</u></b>
<b>EMERGENCY MEDICAL</b>	
SALARY RELATED	333,762
SUPPLIES	14,250
SERVICES	8,890
MAINTENANCE	14,668
EQUIPMENT	9,800
<b>TOTAL EMERGENCY MEDICAL</b>	<b><u>381,370</u></b>
<b>FIRE</b>	
WORKERS' COMP & LIFE INSURANCE	11,350
SUPPLIES	13,350
SERVICES	16,250
MAINTENANCE	14,300
EQUIPMENT	23,600
<b>TOTAL FIRE</b>	<b><u>78,850</u></b>

<b>COMMUNITY CENTER</b>	
SUPPLIES	0
SERVICES	3,640
MAINTENANCE	1,000
EQUIPMENT	<u>0</u>
<b>TOTAL COMMUNITY CENTER</b>	<b><u>4,640</u></b>
<b>MUNICIPAL COURT</b>	
SALARY RELATED	43,140
SUPPLIES	1,500
SERVICES	22,675
MAINTENANCE	1,500
EQUIPMENT	<u>500</u>
<b>TOTAL MUNICIPAL COURT</b>	<b><u>69,315</u></b>
<b>CODE ENFORCEMENT</b>	
SALARY RELATED	47,877
SUPPLIES	4,200
SERVICES	11,200
MAINTENANCE	4,690
EQUIPMENT	<u>0</u>
<b>TOTAL CODE ENFORCEMENT</b>	<b><u>67,967</u></b>
<b>LIBRARY</b>	
SALARY RELATED	90,432
SUPPLIES	4,500
SERVICES	15,170
MAINTENANCE	1,800
EQUIPMENT	<u>2,200</u>
<b>TOTAL LIBRARY</b>	<b><u>114,102</u></b>
<b>ANIMAL CONTROL</b>	
SALARY RELATED	51,177
SUPPLIES	5,929
SERVICES	4,603
MAINTENANCE	3,815
EQUIPMENT	<u>800</u>
<b>TOTAL ANIMAL CONTROL</b>	<b><u>66,324</u></b>
<b>TOTAL GENERAL FUND EXPENSES</b>	<b><u>3,447,370</u></b>



**CITY OF EVERMAN  
WATER/SEWER FUND REVENUE**

REVENUE SOURCE	AMOUNT
CARRY OVER PRIOR YEAR	225,487
WATER SALES	825,000
WATER/SEWER TAP FEES	500
SEWER FEES	618,000
PENALTY AND RECONNECT FEES	80,000
INVESTMENT INCOME	850
INSUFFICIENT CHECK FEES	2,100
MISCELLANEOUS	6,000
<b>TOTAL WATER/SEWER FUND REVENUE</b>	<b><u>1,757,937</u></b>

**CITY OF EVERMAN  
WATER/SEWER FUND EXPENDITURES**

EXPENDITURE BY FUNCTION	AMOUNT
<b>WATER OPERATIONS</b>	
SALARY RELATED	209,194
SUPPLIES	87,020
SERVICES	135,520
MAINTENANCE	29,500
EQUIPMENT	14,000
<b>TOTAL WATER OPERATIONS</b>	<b><u>475,234</u></b>
<b>WATER ADMINISTRATION</b>	
SALARY RELATED	56,900
SUPPLIES	1,700
SERVICES	569,392
MAINTENANCE	8,000
EQUIPMENT	0
<b>TOTAL WATER ADMINISTRATION</b>	<b><u>635,992</u></b>
<b>SEWER OPERATIONS</b>	
SUPPLIES	49,242
SERVICES	471,000
EQUIPMENT	0
<b>TOTAL SEWER OPERATIONS</b>	<b><u>520,242</u></b>
<b>WATER/SEWER DEBT SERVICE</b>	
PAYING AGENT FEES	1,000
BOND INTEREST EXPENSE	125,468.75
<b>TOTAL WATER</b>	<b><u>126,469</u></b>
<b>TOTAL WATER/SEWER FUND EXPENSES</b>	<b><u>1,757,936.75</u></b>

**CITY OF EVERMAN  
DEBT SERVICE FUND**

REVENUES BY SOURCE	AMOUNT
CURRENT PROPERTY TAXES	185,966
DELINQUENT TAXES	4,700
INTEREST	<u>8</u>
<b>TOTAL REVENUE</b>	<b><u>190,674</u></b>

EXPENDITURE BY FUNCTION	AMOUNT
INTEREST EXPENSE	33,937.50
2007 GORB PAYMENT	150,000
2006 TAX NOTE PAYMENT	0
PAYING AGENT EXPENSE	<u>2,000</u>
<b>TOTAL EXPENSES</b>	<b><u>185,937.50</u></b>

**PROPERTY**  
**TAXES**

**CITY OF EVERMAN  
AD VALOREM TAX REVENUE  
AND DISTRIBUTION  
FISCAL YEAR 2012/2013**

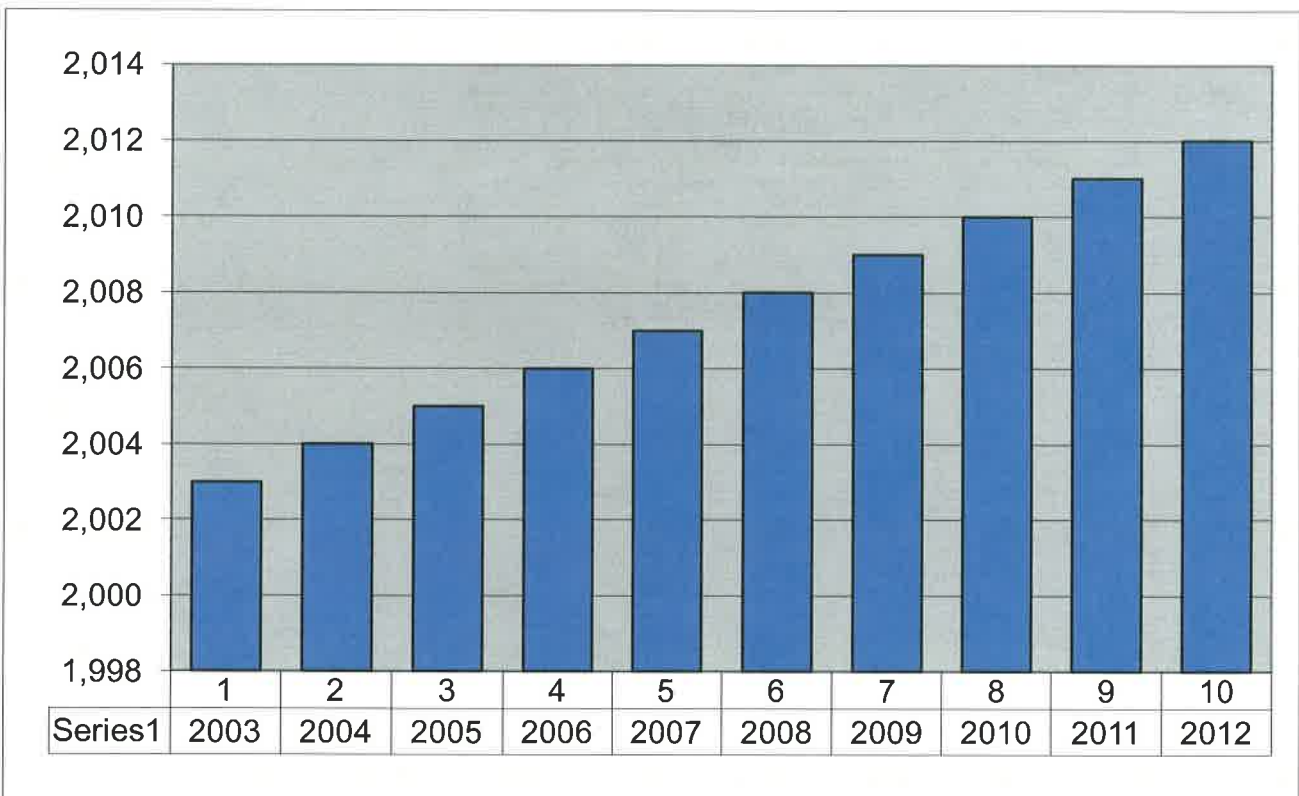
TAXABLE VALUE CALCULATION			
TOTAL APPRAISED VALUE 2012			139,146,442
LESS EXEMPTIONS			
	AGRICULTURAL	305,512	
	DISABLED VETERAN	859,963	
	OVER 65	11,779,796	
	DISABLED PERSON	1,745,300	
	PP NOMINAL VALUE LOSS	10,985,679	
	TOTAL		25,676,250
NET TAXABLE VALUE			113,470,192
RATE PER \$100			1.1054127
TAX LEVY 2012/2013			1,254,313
ESTIMATED % OF COLLECTION			99%
ESTIMATED CURRENT COLLECTIONS			1,241,769

SUMMARY OF TAX COLLECTIONS GENERAL FUND	
CURRENT TAXES	1,080,877
DELINQUENT TAXES	21,000
PENALTY AND INTEREST INCOME	24,000
TOTAL TAX COLLECTIONS	1,125,877

PROPOSED DISTRIBUTION			
	(RATE PER \$100)	(% OF RATE)	
GENERAL FUND CURRENT	0.9525657	85.20%	1,194,816
DEBT SERVICE CURRENT	0.152847	14.80%	191,718
TOTAL CURRENT	1.1054127	100%	1,386,534
GENERAL FUND DELINQUENT	(OF BUDGETED AMOUNT)	100%	21,000
PENALTY AND INTEREST	(OF BUDGETED AMOUNT)	100%	24,000
TOTAL DELINQUENT			45,000
TOTAL ALL TAX COLLECTIONS			1,431,534

**CITY OF EVERMAN  
AD VALOREM 10 YEAR TAX HISTORY**

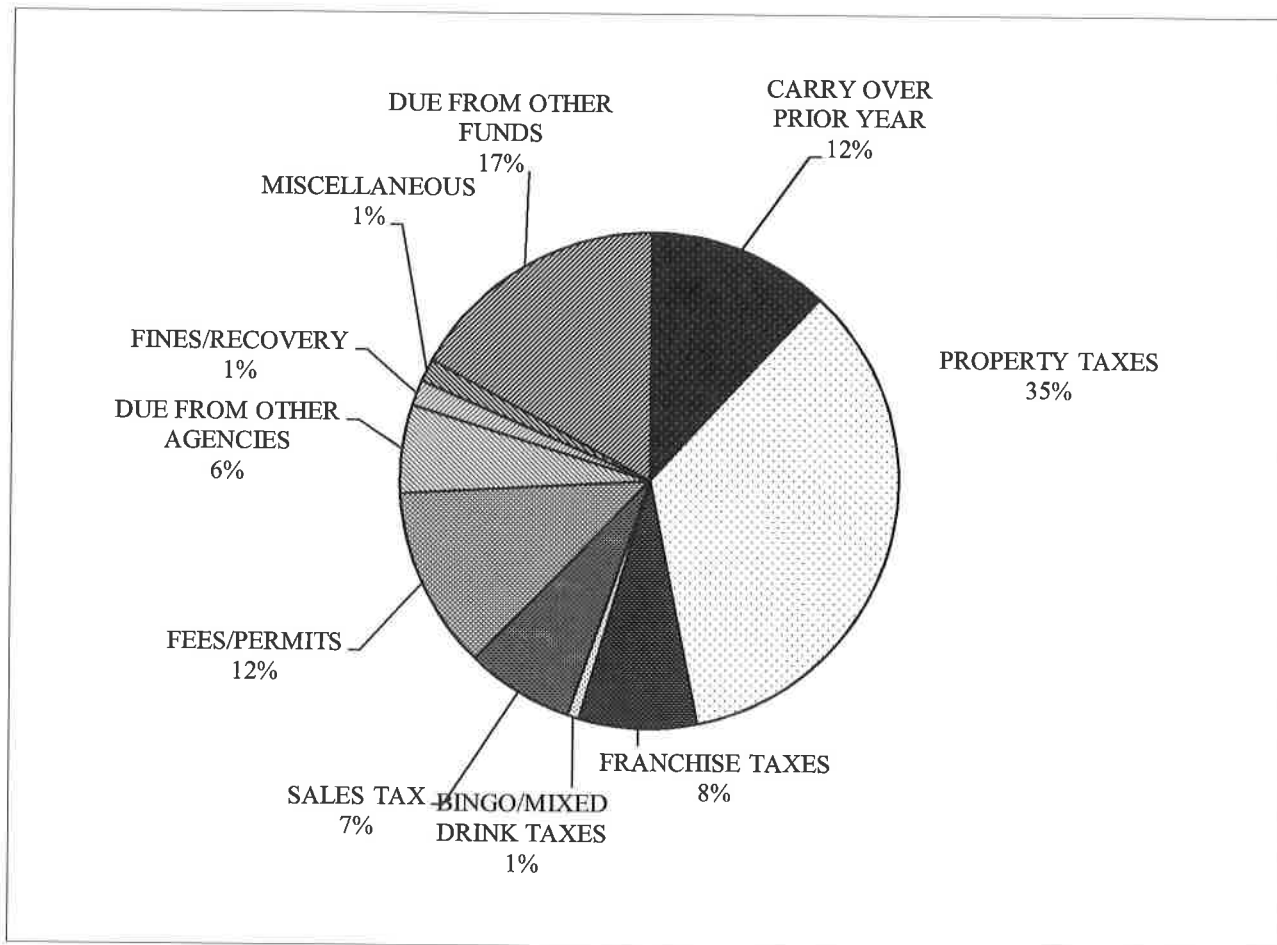
TAX YEAR	ASSESSED VALUE	TAX RATE	PERCENT CHANGE	TAX LEVY	ESTIMATED COLLECTIONS	YEAR END
2003	118,437,435	0.884515	22.47%	1,047,597	99.00%	09.30.04
2004	127,876,694	0.869977	9.30%	1,112,497	99.00%	09.30.05
2005	134,085,720	0.886599	1.90%	1,188,802	99.00%	09.30.06
2006	156,287,556	0.854127	3.60%	1,186,733	99.00%	09.30.07
2007	147,826,239	0.854127	0.00%	1,262,623	99.00%	09.30.08
2008	148,762,261	0.854127	3.57%	1,426,002	99.00%	09.30.09
2009	131,110,537	0.904127	5.86%	1,311,105	99.00%	09.30.10
2010	114,395,181	1.1054127	16.70%	1,143,951	97.00%	09.30.11
2011	116,042,457	1.1054127	1.45%	1,160,425	97.00%	09.30.12
2012	113,470,192	1.1054127	8.00%	1,254,313	97.00%	09.30.13



**GENERAL FUND**  
**REVENUE**

**CITY OF EVERMAN  
GENERAL FUND REVENUE  
2012/2013**

REVENUE SOURCE	AMOUNT
CARRY OVER PRIOR YEAR	408,382
PROPERTY TAXES	1,203,971
FRANCHISE TAXES	266,000
BINGO/MIXED DRINK TAXES	25,600
SALES TAX	240,000
FEES/PERMITS	410,450
DUE FROM OTHER AGENCIES	197,000
FINES/RECOVERY	58,000
MISCELLANEOUS	51,025
DUE FROM OTHER FUNDS	<u>586,942</u>
<b>TOTAL REVENUE</b>	<b><u>3,447,370</u></b>



**CITY OF EVERMAN  
GENERAL FUND REVENUE  
DETAIL**

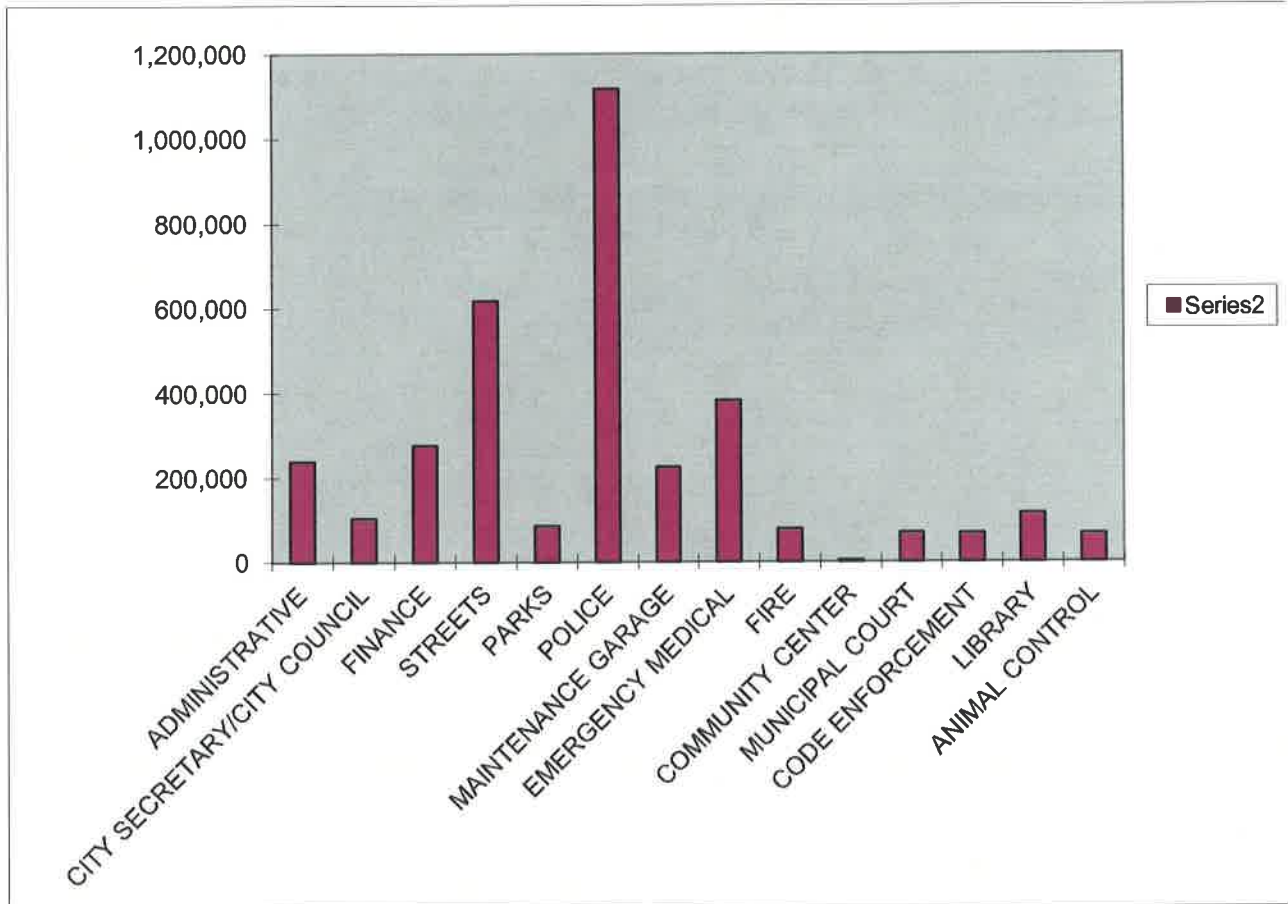
REVENUE SOURCE	AMOUNT
CARRY OVER PRIOR YEAR	408,382
CURRENT TAXES	1,158,971
DELINQUENT TAXES	21,000
TAX PENALTY AND INTEREST	24,000
FRANCHISE TAXES	260,000
RIGHT OF WAY FRANCHISE FEES	6,000
BINGO REVENUE TAX	17,000
MIXED DRINK TAX	8,600
SALES TAX	240,000
<b>SUB TOTAL TAXES</b>	<b>2,143,953</b>
AMUSEMENT MACHINE PERMITS	500
ANIMAL ADOPTIONS	500
ANIMAL CONTROL FEES	600
BUILDING PERMIT FEES	3,000
PLUMBING PERMIT FEES	2,000
ELECTRICAL PERMIT FEES	2,500
ELECTRICAL/MECHANICAL/PLUMBING FEES	2,500
ZONING AND BOARD OF ADJUSTMENT FEES	100
LIQUOR LICENSE FEES	1,000
AMBULANCE FEES	180,000
SANITATION FEES	216,250
PARK FEES	700
COMMERCIAL INSPECTION FEES	100
SECURITY ALARM FEES	700
<b>SUB TOTAL FEES/LICENSE</b>	<b>410,450</b>
COUNTY RUNS FIRE	80,000
COUNTY RUNS EMS	35,000
AMBULANCE FEES/INSURANCE	82,000
<b>SUB TOTAL DONATIONS/CONTRIBUTIONS</b>	<b>197,000</b>
COURT FINES	56,000
LIBRARY FINES/FEES	1,500
LABOR LIENS RECOVERY	500
<b>SUB TOTAL FINES/RECOVERY</b>	<b>58,000</b>
PAY PHONE COMMISSIONS	25
GARAGE SALE PERMITS	3,500
INTEREST OPERATION/INVESTMENT	4,500
ESD GRANT	20,000
LAND RENTAL	2,400
OIL & GAS REVENUE	8,000
STATE GRANT REV	10,000
MISCELLANEOUS	2,000
SALES OF ASSETS	600
<b>SUB TOTAL MISCELLANEOUS</b>	<b>51,025</b>
ADMINISTRATIVE OVERHEAD	550,118
WATER/SEWER PAYMENT IN LIEU OF TAXES	36,824
<b>SUB TOTAL DUE FROM OTHER FUNDS</b>	<b>586,942</b>
<b>TOTAL GENERAL FUND REVENUE</b>	<b>3,447,370</b>



**GENERAL FUND**  
**EXPENDITURES**

**CITY OF EVERMAN  
GENERAL FUND  
EXPENDITURE BY DEPARTMENT  
2012/2013**

DEPARTMENT	AMOUNT
ADMINISTRATIVE	238,227
CITY SECRETARY/CITY COUNCIL	104,404
FINANCE	276,051
STREETS	618,241
PARKS	85,282
POLICE	1,117,998
MAINTENANCE GARAGE	224,599
EMERGENCY MEDICAL	381,370
FIRE	78,850
COMMUNITY CENTER	4,640
MUNICIPAL COURT	69,315
CODE ENFORCEMENT	67,967
LIBRARY	114,102
ANIMAL CONTROL	66,324
<b>TOTAL</b>	<b>3,447,370</b>



**GENERAL FUND EXPENDITURES  
SUMMARY BY CATEGORY & DEPARTMENT**

<b>ADMINISTRATION</b>	
SALARY RELATED	165,057
SUPPLIES	6,900
SERVICES	49,570
MAINTENANCE	5,000
EQUIPMENT	11,700
<b>TOTAL ADMINISTRATION</b>	<b><u>238,227</u></b>
<b>CITY SECRETARY</b>	
SALARY RELATED	57,982
SUPPLIES	2,600
SERVICES	28,772
MAINTENANCE	250
EQUIPMENT	0
<b>TOTAL CITY SECRETARY</b>	<b><u>89,604</u></b>
<b>FINANCE</b>	
SALARY RELATED	124,664
SUPPLIES	2,000
SERVICES	137,387
MAINTENANCE	12,000
EQUIPMENT	0
<b>TOTAL FINANCE</b>	<b><u>276,051</u></b>
<b>CITY COUNCIL</b>	
SUPPLIES	500
SERVICES	<u>14,300</u>
<b>TOTAL CITY COUNCIL</b>	<b><u>14,800</u></b>
<b>STREETS</b>	
SALARY RELATED	290,611
SUPPLIES	4,250
SERVICES	287,090
MAINTENANCE	35,790
EQUIPMENT	500
<b>TOTAL STREETS</b>	<b><u>618,241</u></b>
<b>PARKS</b>	
SALARY RELATED	40,282
SUPPLIES	2,000
SERVICES	28,000
MAINTENANCE	15,000
<b>TOTAL PARKS</b>	<b><u>85,282</u></b>
<b>POLICE</b>	
SALARY RELATED	989,516
SUPPLIES	20,300
SERVICES	51,067
MAINTENANCE	33,350
EQUIPMENT	13,500
EMERGENCY MANAGEMENT	<u>10,265</u>
<b>TOTAL POLICE</b>	<b><u>1,117,998</u></b>

**GENERAL FUND EXPENDITURES  
SUMMARY BY CATEGORY & DEPARTMENT**

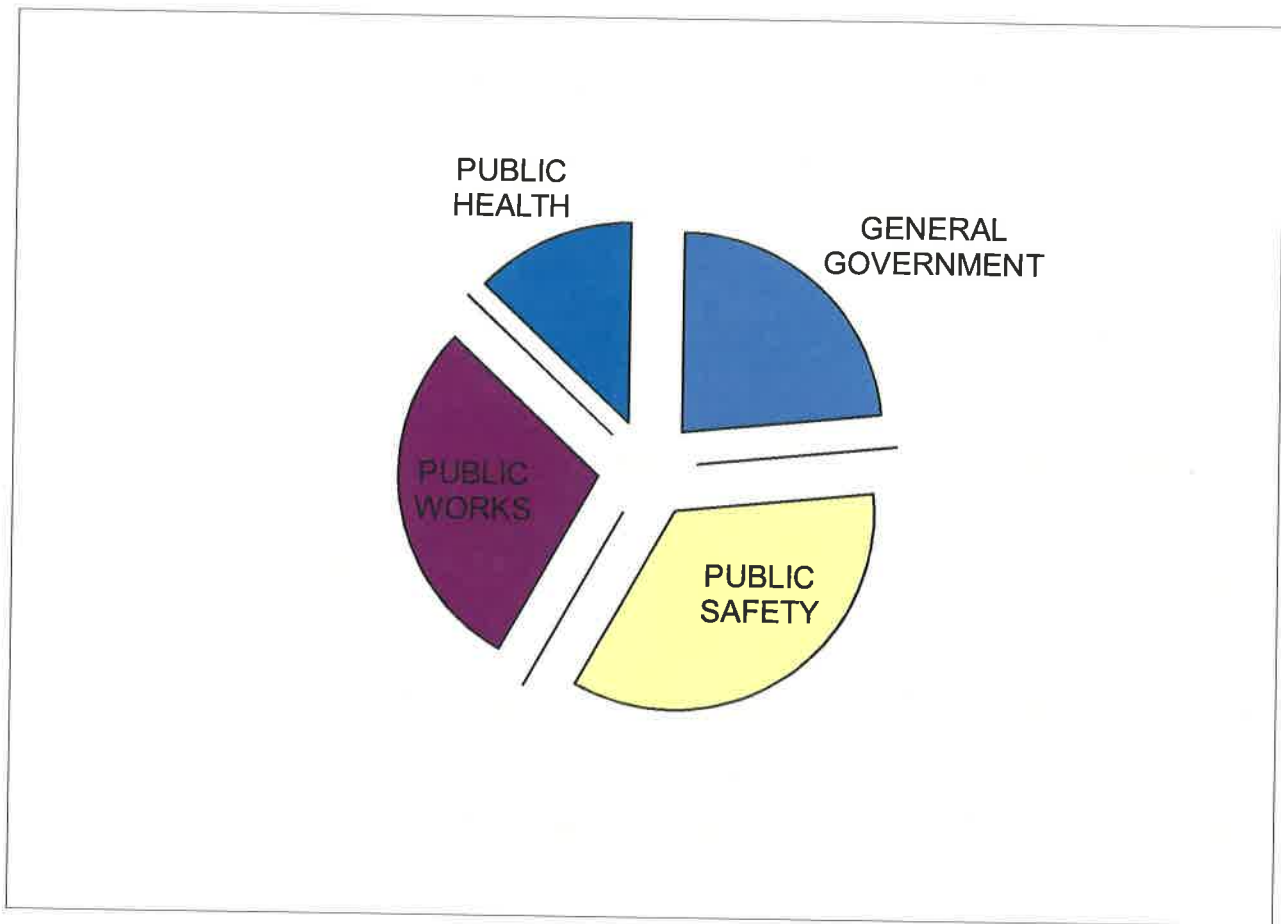
<b>MAINTENANCE GARAGE</b>	
SALARY RELATED	67,574
SUPPLIES	68,375
SERVICES	5,400
MAINTENANCE	82,972
EQUIPMENT	<u>278</u>
<b>TOTAL MAINTENANCE GARAGE</b>	<b><u>224,599</u></b>
<b>EMERGENCY MEDICAL</b>	
SALARY RELATED	333,762
SUPPLIES	14,250
SERVICES	8,890
MAINTENANCE	14,668
EQUIPMENT	<u>9,800</u>
<b>TOTAL EMERGENCY MEDICAL</b>	<b><u>381,370</u></b>
<b>FIRE</b>	
VOLUNTEER COMPENSATION	11,350
SUPPLIES	13,350
SERVICES	16,250
MAINTENANCE	14,300
EQUIPMENT	<u>23,600</u>
<b>TOTAL FIRE</b>	<b><u>78,850</u></b>
<b>COMMUNITY CENTER</b>	
SERVICES	3,640
MAINTENANCE	1,000
<b>TOTAL COMMUNITY CENTER</b>	<b><u>4,640</u></b>
<b>MUNICIPAL COURT</b>	
SALARY RELATED	43,140
SUPPLIES	1,500
SERVICES	22,675
MAINTENANCE	1,500
EQUIPMENT	500
<b>TOTAL MUNICIPAL COURT</b>	<b><u>69,315</u></b>
<b>CODE ENFORCEMENT</b>	
SALARY RELATED	47,877
SUPPLIES	4,200
SERVICES	11,200
MAINTENANCE	4,690
<b>TOTAL CODE ENFORCEMENT</b>	<b><u>67,967</u></b>

**GENERAL FUND EXPENDITURES  
SUMMARY BY CATEGORY & DEPARTMENT**

<b>LIBRARY</b>	
SALARY RELATED	90,432
SUPPLIES	4,500
SERVICES	15,170
MAINTENANCE	1,800
EQUIPMENT	2,200
<b>TOTAL LIBRARY</b>	<b><u>114,102</u></b>
<b>ANIMAL CONTROL</b>	
SALARY RELATED	51,177
SUPPLIES	5,929
SERVICES	4,603
MAINTENANCE	3,815
EQUIPMENT	800
<b>TOTAL ANIMAL CONTROL</b>	<b><u>66,324</u></b>
<b>TOTAL GENERAL FUND EXPENDITURES</b>	<b><u>3,447,370</u></b>

**COST PER CAPITA  
2012/2013**

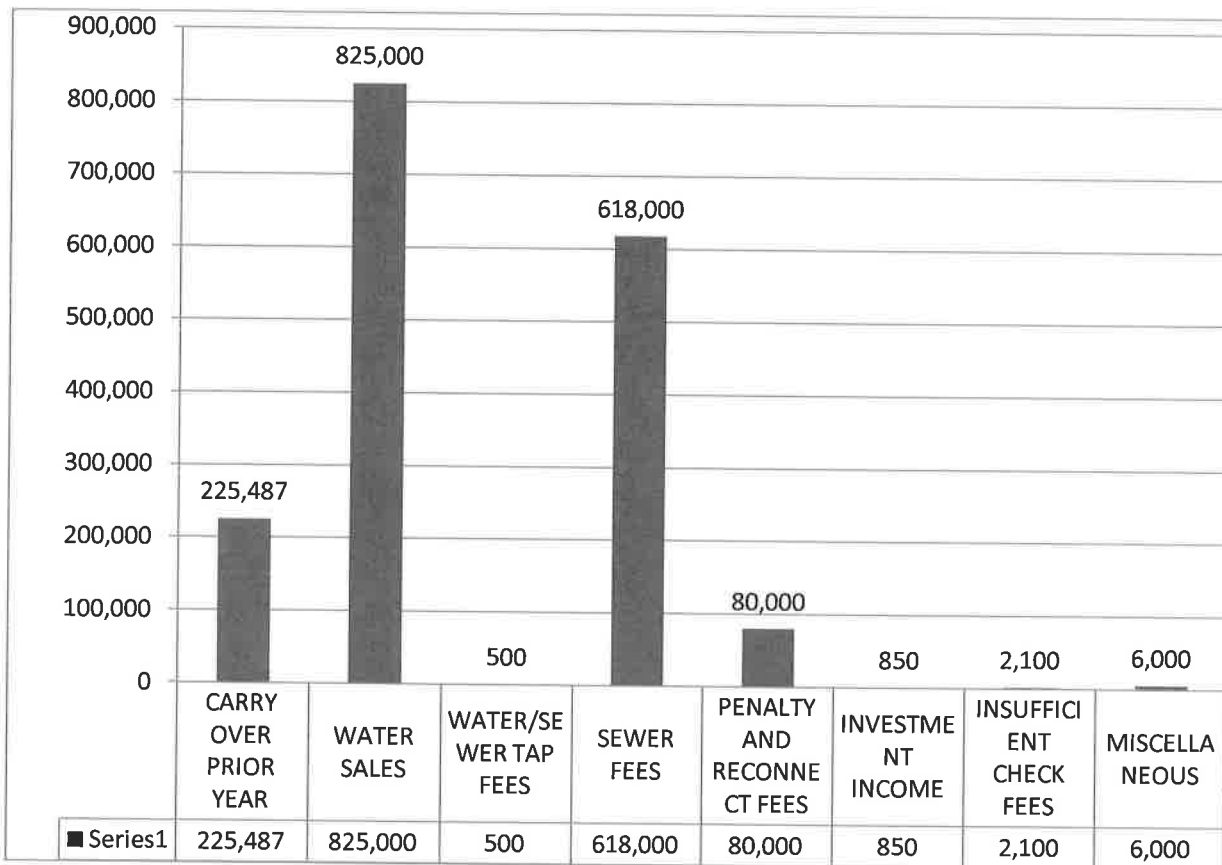
GENERAL GOVERNMENT	\$115
PUBLIC SAFETY	\$171
PUBLIC WORKS	\$142
PUBLIC HEALTH	\$64



**WATER/SEWER FUND**  
**REVENUE**

**CITY OF EVERMAN  
WATER/SEWER FUND  
REVENUE BY SOURCE  
2012/2013**

REVENUE	AMOUNT
CARRY OVER PRIOR YEAR	225,487
WATER SALES	825,000
WATER/SEWER TAP FEES	500
SEWER FEES	618,000
PENALTY AND RECONNECT FEES	80,000
INVESTMENT INCOME	850
INSUFFICIENT CHECK FEES	2,100
MISCELLANEOUS	<u>6,000</u>
<b>TOTAL</b>	<b><u>1,757,937</u></b>

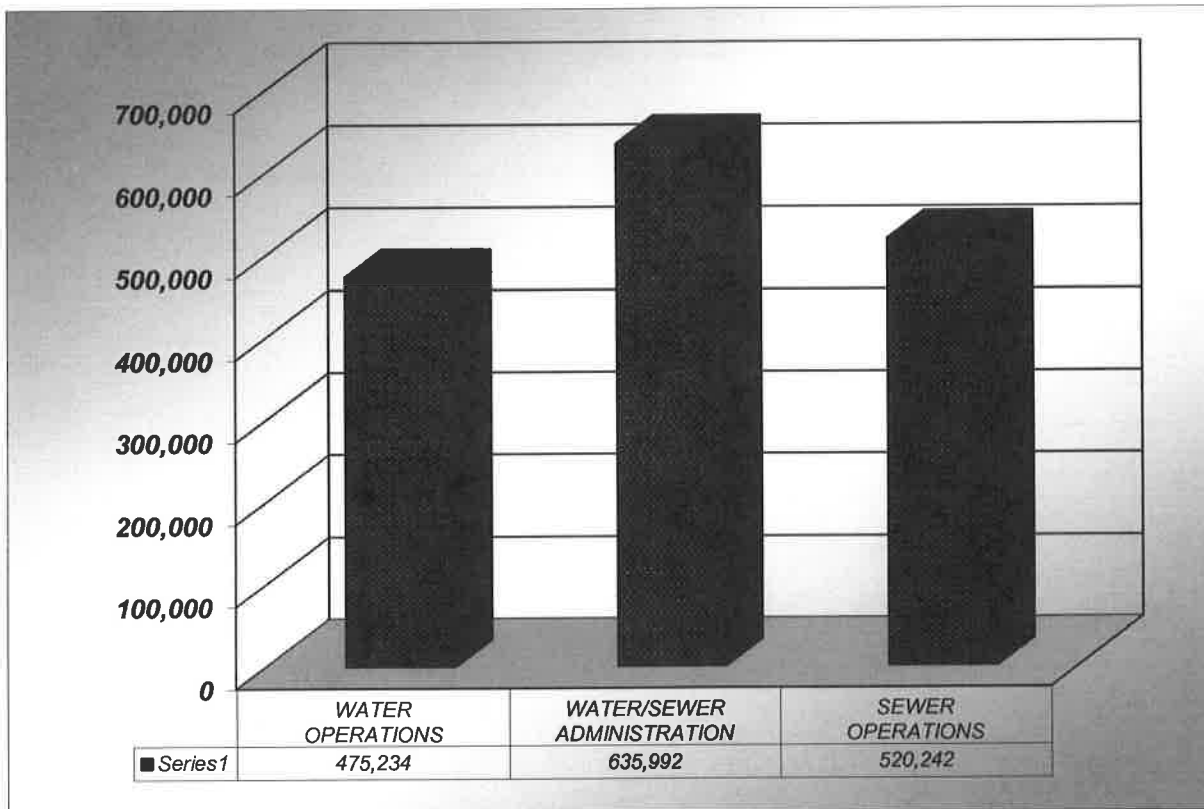




**WATER/SEWER FUND**  
**EXPENDITURES**

**CITY OF EVERMAN  
WATER/SEWER FUND  
EXPENDITURES BY SOURCE  
2012/2013**

EXPENDITURES	AMOUNT
WATER OPERATIONS	475,234
WATER/SEWER ADMINISTRATION	635,992
SEWER OPERATIONS	<u>520,242</u>
<b>TOTAL</b>	<b><u>1,631,468</u></b>



**WATER/SEWER FUND EXPENDITURES  
SUMMARY BY CATEGORY AND DEPARTMENT**

<b>WATER DEPARTMENT</b>	
SALARY RELATED	209,194
SUPPLIES	87,020
SERVICES	135,520
MAINTENANCE	29,500
EQUIPMENT	14,000
<b>TOTAL WATER</b>	<b><u>475,234</u></b>
<b>WATER/SEWER ADMINISTRATION</b>	
SALARY RELATED	56,900
SUPPLIES	1,700
SERVICES	569,392
MAINTENANCE	8,000
<b>TOTAL WATER/SEWER ADMINISTRATION</b>	<b><u>635,992</u></b>
<b>SEWER OPERATIONS</b>	
SUPPLIES	49,242
SERVICES	471,000
<b>TOTAL SEWER OPERATIONS</b>	<b><u>520,242</u></b>
<b>TOTAL WATER/SEWER FUND EXPENDITURES</b>	<b><u>1,631,468</u></b>

**DEBT SERVICE**  
**FUND**

**CITY OF EVERMAN  
DEBT SERVICE FUND  
REVENUE AND EXPENDITURE BY SOURCE  
2012/2013**

REVENUE	AMOUNT
PROPERTY TAX REVENUE	190,666
INTEREST	<u>8</u>
<b>TOTAL DEBT SERVICE REVENUE</b>	<b><u>190,674</u></b>

EXPENDITURE	AMOUNT
INTEREST INCOME	33,937.50
2007 GORB	150,000
PAYING AGENT EXPENSE	<u>2,000</u>
<b>TOTAL DEBT SERVICE EXPENDITURES</b>	<b><u>185,937.50</u></b>

**CITY OF EVERMAN  
DEBT SERVICE REQUIREMENTS**

(INCLUDES PRINCIPLE AND INTEREST PAYMENTS)

<b>FISCAL YEAR END</b>	<b>GORB 2007</b>	<b>FY TOTAL</b>
2013	183,938	183,938
2014	178,313	178,313
2015	182,500	182,500
2016	186,313	186,313
2017	179,938	179,938
2018	183,375	183,375
<b>TOTAL</b>	<b>1,094,375</b>	<b>1,094,375</b>

**COMMUNITY**  
**DEVELOPMENT**  
**CORPORATION**  
**4-B SALES TAX**

**CITY OF EVERMAN  
COMMUNITY DEVELOPMENT FUND  
2012/2013 BUDGET**

**RESERVE AMOUNT AS OF JUNE 30, 2012** **904,814**

REVENUE

4-B SALES TAX REVENUE	125,000
INVESTMENT	<u>1,700</u>
<b>TOTAL 4-B SALES TAX REVENUE</b>	<b><u>126,700</u></b>

EXPENDITURES

DUES, MEMBERSHIPS	2,000
TRAVEL & SCHOOLS	1,300
ADMINISTRATIVE COSTS	12,000
PROFESSIONAL SERVICES	60,000
IMPROVEMENTS	50,000
INCENTIVES	110,000
10% MARKETING	10,500
WEBSITE	3,000
BIG PROJECT	50,000
TIF PROJECT/PLANNING	15,000
<b>TOTAL EXPENDITURES</b>	<b><u>313,800</u></b>

INFORMATION

The city held an election on August 14, 1999, at which time the voters approved one-half percent (1/2%) sales and use tax for the benefit of a development corporation. The city council authorized the creation of the Community Development Corporation on October 19, 1999, for the purpose to promote community development within the city. The city began receiving 4-B sales tax revenue in March of 2000.



**CRIME CONTROL**  
**DISTRICT FUND**

**CITY OF EVERMAN  
CRIME CONTROL DISTRICT FUND  
2011-2013 BUDGET**

**2011/2012 ADOPTED BUDGET**

REVENUE	AMOUNT
PROJECTED CCD SALES TAX REVENUE	40,000
INVESTMENT INCOME	<u>100</u>
<b>TOTAL REVENUE</b>	<b>40,100</b>
<b>EXPENSES</b>	
DUES, MEMBERSHIPS	1,668
TRAINING	1,000
ADMINISTRATIVE COSTS	12,000
MINOR EQUIPMENT - 2 COMPUTERS	3,000
MAJOR EQUIPMENT - PORTABLE SURVEILLANCE SYS	6,480
CAPITAL EQUIPMENT - VEHICLE	22,000
<b>TOTAL EXPENSES</b>	<b>44,480</b>

**2012/2013 PROPOSED BUDGET**

REVENUE	
PROJECTED CCD SALES TAX REVENUE	45,000
INVESTMENT INCOME	<u>140</u>
<b>TOTAL REVENUE</b>	<b>45,140</b>
<b>EXPENSES</b>	
	<b>PAYMENT AMOUNT</b>
DUES, MEMBERSHIPS	1,668
TRAINING	1,000
ADMINISTRATIVE COSTS	12,000
MAJOR EQUIPMENT - CAMERAS, RADAR, RECORDER	25,140
CAPITAL EQUIPMENT - VEHICLE	26,000
<b>TOTAL EXPENSES</b>	<b>65,808</b>

**INFORMATION**

The city held an election on May 4, 2002, at which time the voters approved one-quarter percent (1/4%) sales and use tax for the benefit of a crime control district corporation. The city began receiving Crime Control District Tax Revenue in October 2002.

**STREET IMPROVEMENT**  
**FUND**

**CITY OF EVERMAN  
STREET IMPROVEMENT FUND  
2012/2013 BUDGET**

<u>REVENUE</u>	
STREET IMPROVEMENT TAX	63,500
INVESTMENT	<u>500</u>
<b>TOTAL STREET IMPROVEMENT TAX REVENUE</b>	<b><u>64,000</u></b>
<u>EXPENSES</u>	
ADMINISTRATION COSTS	<u>12,000</u>
CITY STREET PROJECTS	<u>80,000</u>
<b>TOTAL STREET IMPROVEMENT TAX EXPENSES</b>	<b><u>92,000</u></b>

**INFORMATION**

The city held an election on May 7, 2005, at which time the voters approved one-quarter percent (1/4%) sales and use tax for the benefit of street improvement. The city began receiving Street Improvement Tax Revenue in December 2005.

**MISCELLANEOUS**  
**INFORMATION**

## CITY OF EVERMAN

### General Information

Date of Incorporation:	April 1945
Form of Government:	Council/Manager
Home Rule Charter Adopted:	April 1986
Area:	3 Square Miles
Estimated Population:	7,000

### Parks – Recreation – Civic

Three City parks with facilities for baseball, softball, pee wee football and a pavilion for public use. One Community Center is senior citizen meetings. One library is available to the public for a minimum of 32 hours per week.

### Employee Information

#### Authorized Full Time Positions

<u>Department</u>	<u># of Positions</u>
Administration	2
City Secretary	1
Finance	2
Street	4
Parks	1
Police	15
Maintenance Garage	1
Emergency Medical	5
Animal Control	1
Municipal Court	1
Code Enforcement	1
Water/Sewer Operations	4
Water/Sewer Administration	1
<b>Total Full Time Positions</b>	<b>39</b>

#### Authorized Part Time Positions

Street	1
Police	2
Library	5
Emergency Medical	1*
Park	1
Animal Control	1
Water Administration	1
<b>Total Part Time Positions</b>	<b>12</b>

<b>Total All Positions</b>	<b>51</b>
----------------------------	-----------

Note: Number of positions may not equal number of people, i.e. Emergency Medical has one part time position to cover a 24 hour shift, which may include several part time employees on a rotating basis.

**HISTORICAL**  
**INFORMATION**

# CITY OF EVERMAN

## HISTORY

### FISCAL YEAR END

	2005	2006	2007	2008	2009	2010	2011	2012
	ACTUAL	ACTUAL	ACTUAL	ACTUAL	ACTUAL	ACTUAL	ACTUAL	ACTUAL
<b>GENERAL FUND REVENUE</b>								
CARRY OVER PRIOR YEAR			220,000	308,000	63,000	276,948	379,592	301930
CURRENT PROPERTY TAXES	860,173	924,045	955,018	1,016,716	904,438	946,102	1,020,291	1151366
DELINQUENT TAXES	39,949	26,989	43,460	33,000	25,952	33,120	17,304	33508
PENALTY & INTEREST	31,848	26,767	43,577	30,000	24,942	27,745	24,640	41833
FRANCHISE FEES	230,223	265,868	255,828	225,000	282,449	258,175	268,234	292323
BINGO/MIXED DRINK TAX	17,237	20,947	23,416	17,500	24,885	27,261	28160.77	23411
SALES TAX	259,188	278,743	282,793	270,000	248,401	227,369	242,397	246093
<b>SUB TOTAL</b>	<b>1,438,618</b>	<b>1,543,358</b>	<b>1,824,092</b>	<b>1,900,216</b>	<b>1,574,067</b>	<b>1,796,719</b>	<b>1,980,618</b>	<b>2090464</b>
FEES/PERMITS	371,743	382,583	416,483	382,100	422,872	406,615	416,881	415958
DUE FROM OTHER AGENCIES	161,121	188,362	238,859	162,000	358,982	221,135	245,544	227340
FINES/RECOVERY	95,547	114,319	136,524	97,300	102,009	78,838	71,298	63442
MISCELLANEOUS	123,211	207,391	270,907	220,025	218,074	126,892	76,960	93913
DUE FROM OTHER FUNDS	465,455	440,375	483,027	520,116	543,215	561,571	561,382	626773
PROCEEDS FROM LOAN	68490	124,181	0	0	0	0	0	0
<b>TOTAL GENERAL FUND REVENUE</b>	<b>2,724,184</b>	<b>3,000,569</b>	<b>3,369,891</b>	<b>3,281,757</b>	<b>3,219,219</b>	<b>3,191,770</b>	<b>3,352,684</b>	<b>3517891</b>
<b>GENERAL FUND EXPENDITURES:</b>								
ADMINISTRATION (SEE NOTE 1)								
SALARY RELATED	111,045	112,156	119,314	135,917	130,003	125,438	136,216	144275
SUPPLIES	4,476	8,892	6,593	6,500	5,450	6,099	3,896	6007
SERVICES	100,729	62,113	55,805	78,259	62,933	46,180	41,478	45910
MAINTENANCE	4,056	23,419	20,789	5,500	2,530	9,457	10291.28	2687
EQUIPMENT/LAND	10,000	0	119	11,553	1,053	0	1,652	10000
<b>TOTAL ADMINISTRATION</b>	<b>230,307</b>	<b>206,579</b>	<b>202,621</b>	<b>237,729</b>	<b>201,969</b>	<b>187,174</b>	<b>193,534</b>	<b>208878</b>
CITY SECRETARY (SEE NOTE 1)								
SALARY RELATED	48,313	48,587	51,602	58,229	53,938	48,447	51,980	54481
SUPPLIES	2,538	2,661	2,999	2,200	2,336	2,560	3,818	2026
SERVICES	10,331	7,690	8,496	13,230	11,058	14,913	11,254	19084
MAINTENANCE	165	120	90	250	35	140	0	250
EQUIPMENT	982	0	0	0	0	0	0	0
<b>TOTAL CITY SECRETARY</b>	<b>62,329</b>	<b>59,058</b>	<b>63,187</b>	<b>73,909</b>	<b>67,368</b>	<b>66,061</b>	<b>67,052</b>	<b>75841</b>
FINANCE (SEE NOTE 1)								
SALARY RELATED	82,350	83,648	88,348	108,895	99,192	97,634	103,710	107842
SUPPLIES	2,834	3,210	3,460	3,600	1,689	934	982	1622
SERVICES	90,769	90,985	98,531	106,270	102,092	124,280	135,259	119734
MAINTENANCE	13,733	14,153	9,565	12,119	9,731	11,048	14,024	10672
EQUIPMENT	9151.94	0	63,659	0	19,133	0	0	0
<b>TOTAL FINANCE</b>	<b>198,838</b>	<b>191,996</b>	<b>263,563</b>	<b>230,884</b>	<b>231,838</b>	<b>233,896</b>	<b>253,974</b>	<b>239870</b>
CITY COUNCIL (SEE NOTE 4)								
SUPPLIES	173	0	164	500	316	288	432	223
SERVICES	16,217	400	14,046	15,200	13,988	11,631	14,840	15524
<b>TOTAL CITY COUNCIL</b>	<b>16,390</b>	<b>400</b>	<b>14,210</b>	<b>15,700</b>	<b>14,304</b>	<b>11,919</b>	<b>15,272</b>	<b>15747</b>
STREETS (SEE NOTE 3)								
SALARY RELATED	192,324	196,272	207,935	243,695	243,592	229,046	244,164	228294
SUPPLIES	5,442	6,502	6,207	7,900	5,067	4,037	2,629	6634
SERVICES	198,061	225,690	224,911	236,350	265,362	255,543	258,189	281849
MAINTENANCE	28,015	37,174	34,153	33,837	42,181	33,143	41,414	28508
EQUIPMENT	32,202	154,203	186,994	252,068	8,391	2,000	265	326
<b>TOTAL STREETS</b>	<b>456,044</b>	<b>619,841</b>	<b>660,200</b>	<b>773,850</b>	<b>564,594</b>	<b>523,769</b>	<b>546,660</b>	<b>545612</b>
PARKS								
SALARY RELATED	22,202	23,910	29,421	40,056	34,434	28,420	30,612	33281
SUPPLIES	6,425	3,972	3,358	4,350	783	1,790	1,034	570
SERVICES	41,873	42,982	30,421	42,255	29,778	31,902	31,895	18337
MAINTENANCE	1,000	0	0	1,000	0	16,290	37,004	26847
EQUIPMENT	13,516	14,099	10,830	12,700	8,587	0	0	0
<b>TOTAL PARKS</b>	<b>85,016</b>	<b>84,963</b>	<b>74,030</b>	<b>100,361</b>	<b>73,583</b>	<b>78,402</b>	<b>100,544</b>	<b>79036</b>
POLICE								
SALARY RELATED	665,280	685,002	682,933	829,615	844,774	825,532	866,866	955276
SUPPLIES	15,010	16,496	21,480	21,700	15,042	16,977	16,555	11734
SERVICES	29,186	29,864	27,197	35,450	30,010	33,602	35,546	48792
MAINTENANCE	19,866	21,555	21,851	23,566	23,691	30,429	17,570	21601
EQUIPMENT	4,426	8,751	22,422	10,353	5,658	12,430	12227.37	10011
<b>TOTAL POLICE</b>	<b>733,769</b>	<b>761,668</b>	<b>775,883</b>	<b>920,684</b>	<b>919,175</b>	<b>918,970</b>	<b>948,764</b>	<b>1047414</b>



**FISCAL YEAR END**

	2005	2006	2007	2008	2009	2010	2011	2012
	ACTUAL	ACTUAL	ACTUAL	ACTUAL	ACTUAL	ACTUAL	ACTUAL	ACTUAL
<b>MAINTENANCE GARAGE</b>								
SALARY RELATED	42,597	43,216	45,443	52,224	52,239	51,428	55,920	58228
SUPPLIES	39,050	58,908	50,971	46,700	50,386	66,124	78,092	70604
SERVICES	4,601	5,950	4,443	6,170	7,409	4,734	4,537	3825
MAINTENANCE	24,063	27,997	34,320	26,555	45,781	31,087	27,312	38054
EQUIPMENT	182	0	0	300	0	0	473	278
<b>TOTAL MAINTENANCE GARAGE</b>	<b>110,494</b>	<b>136,070</b>	<b>135,177</b>	<b>131,949</b>	<b>155,814</b>	<b>153,374</b>	<b>166,334</b>	<b>170989</b>
<b>EMERGENCY MEDICAL</b>								
SALARY RELATED	190,796	218,124	229,827	328,490	244,976	240,418	256,561	260459
SUPPLIES	12,818	11,114	11,956	12,400	18,704	10,693	13,287	12653
SERVICES	6,205	5,434	5,538	6,580	6,560	5,988	6,434	10056
MAINTENANCE	8,883	12,937	23,724	15,700	16,477	6,142	14,776	13750
EQUIPMENT	1,512	115,426	714	1,000	141,765	2,241	789	378819
<b>TOTAL EMERGENCY MEDICAL</b>	<b>220,214</b>	<b>363,036</b>	<b>271,760</b>	<b>364,170</b>	<b>428,483</b>	<b>265,482</b>	<b>291,847</b>	<b>675738</b>
<b>FIRE</b>								
WORKERS COMP & LIFE INS.	1,108	8,224	7,331	8,350	7,221	10,302	10,282	10974
SUPPLIES	11,064	13,223	12,715	14,050	26,414	2,605	1,154	7487
SERVICES	13,069	15,738	13,603	19,610	16,281	16,714	14,649	10728
MAINTENANCE	86,128	25,483	22,687	24,216	23,641	13,626	18,105	19593
EQUIPMENT	24,276	5,924	59,256	53,253	391,933	38,014	43,482	26178
<b>TOTAL FIRE</b>	<b>135,645</b>	<b>68,592</b>	<b>115,592</b>	<b>119,479</b>	<b>465,488</b>	<b>81,262</b>	<b>87,671</b>	<b>74959</b>
<b>COMMUNITY CENTER</b>								
SUPPLIES	100	0	28	100	0	0	0	0
SERVICES	3,379	5,473	5,021	6,155	3,473	3,114	4,558	3217
MAINTENANCE	936	1,642	504	14,880	825	325	324	180
EQUIPMENT	289	666	0	500	0	0	0	
<b>TOTAL COMMUNITY CENTER</b>	<b>4,684</b>	<b>7,780</b>	<b>5,554</b>	<b>21,635</b>	<b>4,298</b>	<b>3,439</b>	<b>4,882</b>	<b>3397</b>
<b>MUNICIPAL COURT</b>								
SALARY RELATED	33,136	34,438	37,145	44,544	44,198	43,836	41,256	35002
SUPPLIES	399	1,049	1,093	1,100	1,350	1,500	1,361	1596
SERVICES	9,732	10,687	13,573	15,680	15,241	17,170	18,552	21305
MAINTENANCE	3,526	2,078	2,283	4,500	1,892	3,353	1,764	1654
EQUIPMENT	0	0	0	0	0	699	0	500
<b>TOTAL MUNICIPAL COURT</b>	<b>46,794</b>	<b>48,251</b>	<b>54,094</b>	<b>65,824</b>	<b>62,680</b>	<b>66,558</b>	<b>62,934</b>	<b>60057</b>
<b>CODE ENFORCEMENT</b>								
SALARY RELATED	45,835	49,881	52,881	59,109	38,593	36,280	37,861	41001
SUPPLIES	1,249	3,236	2,117	2,500	3,044	7,638	1,801	1712
SERVICES	4,036	3,583	9,573	6,200	27,482	14,271	8,458	2273
MAINTENANCE	6,936	6,764	6,807	7,307	5,649	68	0	3591
EQUIPMENT	15,190	0	0	0	131	1,505	0	1463
<b>TOTAL CODE ENFORCEMENT</b>	<b>73,247</b>	<b>63,464</b>	<b>71,378</b>	<b>75,116</b>	<b>74,898</b>	<b>59,761</b>	<b>48,119</b>	<b>50041</b>
<b>LIBRARY</b>								
SALARY RELATED	33,423	32,008	34,297	71,180	47,296	53,776	59,230	62209
SUPPLIES	2,782	3,088	1,309	3,150	1,487	1,877	1,585	1476
SERVICES	9,825	11,810	10,245	14,425	12,423	16,426	16,924	13862
MAINTENANCE	1,568	3,502	764	2,000	469	1,501	1,309	1373
EQUIPMENT	0	1,529	905	400	10,980	4,209	4,521	80
<b>TOTAL LIBRARY</b>	<b>47,598</b>	<b>51,938</b>	<b>47,521</b>	<b>91,155</b>	<b>72,655</b>	<b>77,790</b>	<b>83,569</b>	<b>79000</b>
<b>ANIMAL CONTROL</b>								
SALARY RELATED	32,125	30,448	33,837	47,239	40,215	42,685	40,202	42647
SUPPLIES	928	2,086	2,321	2,650	7,159	2,913	5,670	2525
SERVICES	5,547	2,906	1,669	4,185	4,936	3,292	2252.1	1705
MAINTENANCE	1,376	1,176	1,379	800	22,217	1,771	6,617	1448
EQUIPMENT	500	0	318	6,428	1,147	240	316.22	228
<b>TOTAL ANIMAL CONTROL</b>	<b>40,477</b>	<b>36,615</b>	<b>39,525</b>	<b>61,302</b>	<b>75,673</b>	<b>50,902</b>	<b>55,057</b>	<b>48551</b>
<b>TOTAL GENERAL FUND EXPENSE</b>	<b>2,461,844</b>	<b>2,700,252</b>	<b>2,794,293</b>	<b>3,283,747</b>	<b>3,412,822</b>	<b>2,778,759</b>	<b>2,926,212</b>	<b>3375128</b>

**FISCAL YEAR END**

	2005 ACTUAL	2006 ACTUAL	2007 ACTUAL	2008 ACTUAL	2009 ACTUAL	2010 ACTUAL	2011 ACTUAL	2012 ACTUAL
<b>WATER/SEWER FUND REVENUE:</b>								
CARRY OVER PRIOR YEAR			400,000	400,000 0		199,769	176370	127670
WATER SALES	786,573	791,913	676,398	795,000	838,198	827,086	1,031,862	796831
WATER/SEWER TAP FEES	2,700	1,225	6,050	1,000	3,350	0	3,156	52
SEWER FEES	626,698	701,263	627,565	700,000	635,638	622,729	622,859	623182
PENALTY AND RECONNECT FEES	41,606	67,040	63,479	56,000	82,032	82,367	85,489	103850
INVESTMENT INCOME	17,980	43,682	57,458	53,500	8,352	1,080	661	938
INSUFFICIENT CHECK FEES	950	1,303	1,898	1,500	2,495	3,740	2,363	2501
MISCELLANEOUS	6,412	6,833	7,478	5,000	6,758	7,058	7,260	6411
<b>TOTAL WATER/SEWER FUND REVENUE</b>	<b>1,482,918</b>	<b>1,613,258</b>	<b>1,840,326</b>	<b>2,012,000</b>	<b>1,576,823</b>	<b>1,743,829</b>	<b>1,930,021</b>	<b>1661435</b>
<b>WATER OPERATIONS (SEE NOTE 2)</b>								
SALARY RELATED	111,739	117,908	141,133	165,789	159,484	155,112	161,422	175132
SUPPLIES	78,650	68,894	94,101	92,530	29,752	31,880	69,545	929
SERVICES	98,256	146,581	102,203	133,675	127,603	112,694	130,899	96006
MAINTENANCE	11,386	12,774	12,223	18,002	44,025	28,133	29,231	14887
EQUIPMENT	14,061	15,865	65,986	392,253	97,562	19,118	4869.66	21059
<b>TOTAL WATER OPERATIONS</b>	<b>314,092</b>	<b>362,022</b>	<b>415,646</b>	<b>802,249</b>	<b>458,426</b>	<b>346,937</b>	<b>395,968</b>	<b>308013</b>
<b>WATER ADMINISTRATION (SEE NOTE 2)</b>								
SALARY RELATED	41,389	45,193	43,871	49,906	51,487	48,494	51,447	48042
SUPPLIES	7,117	8,851	9,110	12,160	7,923	1,734	1,555	1657
SERVICES	467,064	430,417	473,465	510,531	527,174	540,606	540,875	557166
MAINTENANCE	10,496	7,396	8,576	11,600	7,332	6,886	8,176	13845
EQUIPMENT	5,712	0	1,849	1,000	2,729	1,505	0	0
<b>TOTAL WATER ADMINISTRATION</b>	<b>531,779</b>	<b>491,858</b>	<b>536,870</b>	<b>585,197</b>	<b>596,646</b>	<b>599,225</b>	<b>602,053</b>	<b>620711</b>
<b>SEWER OPERATIONS</b>								
SUPPLIES	4,739	6,299	4,576	7,300	2,879	2,741	10,816	3258
SERVICES	329,506	436,856	356,279	471,000	468,585	417,615	413,275	385914
EQUIPMENT	0	0	12,253	12,300	12,300	0		
<b>TOTAL SEWER OPERATIONS</b>	<b>334,245</b>	<b>443,155</b>	<b>373,108</b>	<b>490,600</b>	<b>483,764</b>	<b>420,356</b>	<b>424,091</b>	<b>389172</b>
<b>WATER /SEWER DEBT SERVICE</b>								
BOND INTEREST EXPENSE	129,345	77,380	132,145	128,545	53,875	92,522	52,564	127643
<b>TOTAL WATER/SEWER DEBT SERVICE</b>	<b>129,345</b>	<b>77,380</b>	<b>132,145</b>	<b>128,545</b>	<b>53,875</b>	<b>92,522</b>	<b>52,564</b>	<b>127643</b>
<b>TOTAL WATER/SEWER FUND EXPENSES</b>	<b>1,309,462</b>	<b>1,374,415</b>	<b>1,457,769</b>	<b>2,006,591</b>	<b>1,592,710</b>	<b>1,459,041</b>	<b>1,474,676</b>	<b>1445539</b>

**Note 1:**

In budget year 98/99, Administration Budget was divided into 3 separate departments.

Expenditures were divided between Administration, City Secretary, and Finance

**Note 2:**

In budget year 98/99, Water Administration was created and expenses pulled from Water Operations.

**Note 3:**

In budget year 99/00 Street Department added a Director of Public Works

**Note 4:**

In budget year 03/04 City Council budget was created and expenses pulled from City Secretary

**CAPITAL IMPROVEMENT**  
**PLAN**

CITY OF EVERMAN  
2012-2017 CAPITAL IMPROVEMENT PROJECTS

SUMMARY BY DEPARTMENT

	2012/2013	2013/2014	2014/2015	2015/2016	2016/2017
<b>ADMINISTRATION</b>					
Computer replacement	\$1,700				\$1,700
City Hall Bldg Imp Regrout tile floors		\$2,000			
<b>CITY SECRETARY</b>					
Computer replacement		\$1,700			
<b>FINANCE</b>					
Computer replacement		\$1,700	\$1,700		
<b>STREET</b>					
Rebuild Streets & Sidewalk					\$200,000
Street Striping			\$4,000		
Vehicle Replacement - 1				\$22,000	
1 Ton Truck				\$35,000	
Computer replacement		\$1,700			
<b>PARK</b>					
Pave Community Center parking lot		\$45,000			
Johnson Park parking lot			\$45,000		
Ballfield Fence	\$5,000	\$5,000	\$5,000	\$5,000	\$5,000
<b>POLICE</b>					
Roof Repair	\$21,550				
Hand Held Radios - 3	\$10,000				
<b>Crime Control</b>					
2 Patrol Units		\$50,000			
1 Patrol Unit	\$26,000		\$25,000		
In Car Video		\$10,000			
Ballistic Vests - 8				\$4,400	
TCLEOSE Training Contract	\$1,000	\$1,000	\$1,000	\$1,000	\$1,000
Body Cam - 8	\$7,240				
Computer Intelligence Network	\$1,668	\$1,668	\$1,668	\$1,668	\$1,668
Computers - 2		\$3,400			
Radar Units - 3	\$4,000				
Recorder	\$13,900				
<b>MAINTENANCE</b>					
Vehicle Replacement			\$22,000		
Engine Analyzer upgrades		\$2,000		\$2,000	
Building Renovation	\$50,772				
<b>EMS</b>					
New Ambulance - Cab & Chasis				\$76,000	
<b>FIRE DEPARTMENT</b>					
Rescue 19		\$3,000			\$225,000
<b>MUNICIPAL COURT</b>					
Computer			\$1,700		
<b>CODE ENFORCEMENT</b>					
Vehicle Replacement				\$25,000	
Computer replacement		\$1,700			
Computer Program	\$4,690				
<b>LIBRARY</b>					
Books	\$3,000	\$3,000	\$3,000	\$3,000	\$3,000
Computer	\$2,000	\$2,000	\$2,000	\$2,000	\$2,000
<b>ANIMAL CONTROL FACILITY</b>					
Computer Program	\$2,815				
<b>WATER ADMINISTRATION</b>					
Computer replacement		\$3,400	\$1,700		
<b>WATER/SEWER OPERATIONS</b>					
Meter Reader Truck			\$22,200		
Booster Pump Replacement				\$50,000	
Water Line Replacement	\$100,000	\$100,000	\$100,000	\$100,000	\$100,000
Dump Truck 5 YD+			\$65,000		
Sewer Line Replacement	\$46,242				
<b>TOTALS</b>	<b>\$301,577</b>	<b>\$238,268</b>	<b>\$300,968</b>	<b>\$327,068</b>	<b>\$539,368</b>